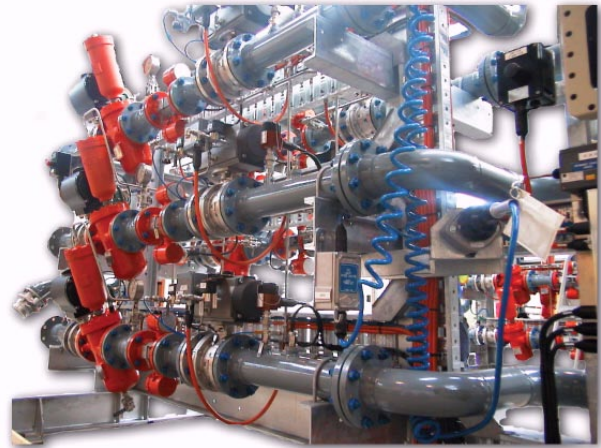


DKI strengthens relationships with independents.

DKI's strong relationship with independent oil and storage companies continues to grow.

In August 2009 DKI were engaged by Neil Harley and Associates to provide Pacific Terminals with a tanker truck load out facility for installation at Pinkenba. Pacific Terminals are involved in the handling and storage of bulk flammable and combustible liquids including chemicals, petroleum, edible oils and fats. Pacific Terminals have facilities in Australia, New Zealand and China.

DKI's scope of supply included a 5 arm SlimLine module combined with a 5 metering run hybrid upstream blending module. The integrated module package is to allow Pacific Terminals to load tanker trucks with either straight product and/or varying ethanol and biodiesel blends. The particular module configuration for blending allows ratios to be changed on a per load basis between 0 and 20 %



In accepting the order, DKI committed to meeting Pacific Terminals strict business requirement deadlines. The loading modules had to be on site and operational within 3 months from order date. To ensure the delivery date was met, DKI and suppliers worked diligently together ensuring on time deliveries of components and manufacturing went according to plan. Commissioning at site took 9 man days and was completed in late January 2010 exactly as planned.

With the success of the first module supplied, a second Slimline and blending module was ordered by Pacific Terminals in April 2010. DKI successfully commissioned the second loading modules in August 2010.

The new modules at Pinkenba gives Pacific Terminals additional loading capability but perhaps more importantly gives greater flexibility in products they are able to create for their customers.

DKI would like to acknowledge and thank Neil Harley, Wayne Alexander of Neil Harley and Associates, Phil Neville, Neville Grundy and Dallas Taggart of Pacific Terminals, Cuong Nguyen of DKI and their respective teams for making these two projects successful.