

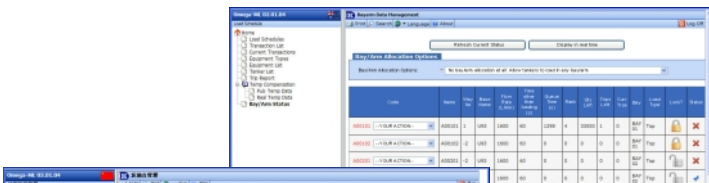
Omega-ML is Diamond Key International's next generation Terminal Automation System (TAS) solution. Building on the strengths of Omega 3000, Omega-ML takes terminal automation software to the next level, providing terminal operators with a scaleable and extensible software environment to manage and control operations and track product deliveries.

Omega-ML utilises a web browser interface compatible with the widely adopted Explorer 7.0 and Firefox 3.0.5 applications. Operators can use their everyday PC to access the Omega-ML application screens. There is no need for installation and management of third party interface software where software environments are controlled. The individual screens present very easy to use and navigate drop down lists, menus, buttons and check boxes for 'point and click' workflow. In addition, the user has the ability to view Omega-ML screens in any environment ie: PDA, Red Hat Enterprise Linux 4, Mac OS X v10.5, as long as the user has authorisation for access to Omega-ML.

Should alternate languages be required, Omega-ML currently supports a number of Latin based languages in addition to Chinese. Language selection is via a drop down list which can be alternated at any time, on any screen.

## Stock Management

The Stock Management function of Omega-ML controls multi-company ownership of products at the site. Control is achieved through reporting, data entry and monitoring stock levels. Omega-ML manages stock on the site by monitoring and recording the quantities and movements of stock in the tanks. Product Imports to a tank include pipeline receipt, ship unloading and vapour recovery metering. Product exports from a tank include pipeline export and vehicle loading.



**Omega-ML**

Copyright © 2008 Diamond Key International Pty Limited  
See the complete patent and legal notice under Help

## Reporting

Integrated into Omega-ML is a range of pre-defined reports, however, it also has the capability to sort on an extensive range. This allows the user to create reports to their individual requirement which can then be saved as templates for future use.

Once a report is defined it can be previewed in real-time (prior to printing), in html, excel, CVS and txt format. The report can then be printed to a normal network printer or the data exported in the chosen format for use in other software eg. Crystal Reports. Reports can be generated using data in the database log which can be stored for up to 1 year.

## Storage Tanks

Omega-ML is configured with all tanks on site which are then monitored or controlled by the TAS. Omega-ML stores the tank name, product name, product code, product classification and product density for each tank.

## Automatic Gauging Systems

Omega-ML interfaces with external tank gauging systems eg. CIU+, allowing up to the minute details of stock quantities.

## Product Import

Product Import is measured by changes in tank gauge levels which produces a product movement record.

## Product Export

Product Export includes export by pipeline and vehicle loading. Each of these types of exports are managed.

## Order Management

Orders can be entered through the Omega-ML administration interface or from an external host and sent through to Omega-ML across the host communications link.



Username

Password



## Mutual Success Through Teamwork With Customers

Specifications stated are subject to change without notice. Diamond Key International Pty Limited accepts no liability of any kind for errors or omissions

## Loading

Omega-ML has been specifically developed to optimise bulk vehicle loading. Loading Controllers, suitable for hazardous areas, integrate the functions of safety interlocks, flow computer, batch controller and driver interface. Loading Controllers allow multiple compartments to be loaded and will ensure correct drawer product in each compartment.

## Inventory Management/Load Scheduling

The Omega-ML Load Scheduling function is used to monitor and control product loading at the site. This function includes specifying loading equipment (tankers), loading plans (schedules) and monitoring loading transactions and recording product returns.

## Load Documents

At completion of product loading, the operator / driver will obtain suitable documents. The documents that can be produced by Omega-ML include; Bill of Lading, Delivery Note, Industry Product Movement, Hazchem and Load Report.

## Identification Media Assignment

The Identification Assignment function in Omega-ML allows security identification media to be linked to specific personnel and/or vehicles.

## Access Control

Access is controlled to areas via gates and doors and to product at loading points. This is achieved by providing ID media reading devices at specific locations around a site, including entry, exit gates, document collection areas and loading bays. Access Control is managed by Role, Timecode and ID.

## Journal

The Journal is a non modifiable list of all events occurring within Omega-ML arranged in chronological order and available to be selected, searched and printed.

## Customer Service Centre

Diamond Key International provides complete customer support:

- full turnkey installation;
- full supervisor, operator and applications training;
- full 24 hour, world-wide, dial-up diagnostics and software upgrade facilities;
- full 24 hour world-wide access to DKI's Customer Service Centre.

**Diamond Key International** is your partner in bringing to your organisation the benefits of implementing terminal automation.

### Head Office

110 Henderson Rd, PO Box 2813 Rowville, Victoria 3178 AUSTRALIA, Phone: +61 3 9730 8888, Fax: +61 3 9764 9931

### Locations:

Selangor, Malaysia Phone: +60 3 7727 0755, Fax: +60 3 7727 1755

China - Beijing Phone: +86 10 6297 1803, Fax: +86 10 6297 5591

Bangkok, Thailand Phone: +66 2 652 2617, Fax: +66 2 652 2618

China - Guangzhou Phone: +86 20 3623 9655, Fax: +86 20 3623 9639

[www.diamondkey.com](http://www.diamondkey.com)